



Washington University in St. Louis

SCHOOL OF MEDICINE



# Nephrology Update For the Primary Care Provider

An In-Depth Review and Update in  
Kidney Disease Management

March 25, 2017

Eric P Newman Education Center (EPNEC)  
Seminar Room B  
320 S. Euclid Ave  
St. Louis, MO 63110

Co-Presented by the Division of Nephrology at  
Washington University School of Medicine (WUSM) in  
St. Louis and the National Kidney Foundation (NKF)

CME Provided by Washington University School of  
Medicine in Saint Louis Continuing Medical Education



National  
Kidney  
Foundation®

# Nephrology Update For the Primary Care Provider

## **Audience:**

This live activity is designed for primary care physicians including health care professionals, physicians in training, pharmacists, nephrologists, nurses, and nurse practitioners who are involved in the care of patients with kidney disease.

The results of this activity is increased knowledge, competence, performance, and improved patient care.

At the conclusion, participants will be able to apply the latest clinical trials results in the management of patients with chronic kidney disease.

## **Learning Objectives:**

- Accurately diagnose and evaluate patients with chronic kidney disease (CKD) .
- Appropriately manage renal osteodystrophy, hypertension, and anemia in CKD.
- Manage electrolyte derangements associated with CKD.
- Discuss the mechanisms of acute kidney injury and it's implications for progression toe CKD.
- Discuss the various options for renal replacement therapy.
- Manage common issues that arise for primary care providers in the care of CKD, dialysis, and kidney transplant patients.
- Manage infections associated with the dialysis population.

## **Course Director (Washington University) :**

### **Timothy Yau, MD**

*Assistant Professor of Medicine, Division of Nephrology*

### **Washington University Faculty:**

**Tarek Alhamed, MD, MS, FACP, FASN**

*Associate Professor of Medicine, and Co-Director, Renal Fellowship Training Program*

**Steven Cheng, MD**

*Associate Professor of Medicine, and Co-Director, Renal Fellowship Training Program*

**Daniel Coyne, MD**

*Professor of Medicine, and*

*Director, Hemodialysis, Chromalloy American Kidney Center and Outpatient Renal Clinics*

**Seth Goldberg, MD**

*Assistant Professor of Medicine*

**Caline Mattar, MD**

*Instructor, Medicine*

**Brent W. Miller, MD**

*Associate Professor of Medicine, and Medical Director, Home Dialysis*

**Aubrey R. Morrison, MD, MBBS, MACP, FASN**

*Professor of Medicine, and Co-Director, Renal Fellowship Training Program*

**Anitha Vijayan, MD, FASN**

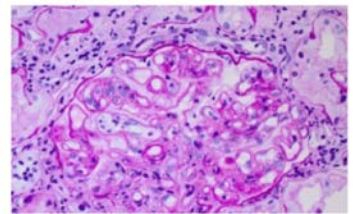
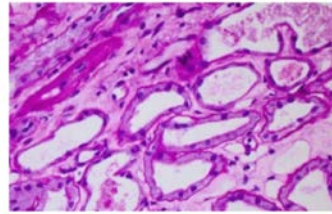
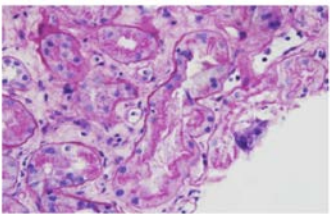
*Professor of Medicine, and Director, Living Kidney Donor Evaluation, and Director, Acute Dialysis Unit, Barnes-Jewish Hospital*



# Nephrology Update

## Agenda

- 8:00 am Continental Breakfast
- 8:30 am **Primary Care Approach to CKD Detection, Management, and Delaying Progression**  
Timothy Yau, MD
- 9:00 am **Vitamin D, PTH, and Bone Disease in CKD**  
Seth Goldberg, MD
- 9:30 am **Management of Anemia in CKD and Dialysis**  
Daniel Coyne, MD
- 10:00 am Break
- 10:30 am **Hypertension and Renovascular Disease**  
Aubrey Morrison, MD, MBBS, MACP, FASN
- 11:00 am **Acute Kidney Injury**  
Anitha Vijayan, MD, FASN
- 11:30 am **Update on Novel Potassium Binding Agents**  
Steven Cheng, MD
- 12:00 pm Lunch break
- 1:00 pm **Management of Infections in the Dialysis Population**  
Caline Mattar, MD
- 1:30 pm **Home Modalities for Renal Replacement Therapy**  
Brent Miller, MD
- 2:00 pm **Primary Care for the Kidney Transplant Recipient**  
Tarek Alhamed, MD, MS, FACP, FASN
- 2:30 pm **Adjourn**



**Accommodations:**

Make your hotel reservations directly with the hotel and indicate that you are attending a Washington University seminar to receive our special rate.

• **The Parkway Hotel** [adjacent to the conference center] . Group code is 6617

(314) 256-7777 toll free (866) 314-7700

[www.theparkwayhotel.com](http://www.theparkwayhotel.com)

4550 Forest Park Blvd., St. Louis, MO 63110

• **Chase Park Plaza** [5 blocks from the medical center campus]

(314) 633-3000 toll free (877) 587-2427

[www.chaseparkplaza.com](http://www.chaseparkplaza.com)

212-232 N. Kingshighway Blvd., St. Louis, MO 63108

**Please Note:** Washington University is not responsible for airline, hotel reservations or any other travel expenses. Please confirm seminar registration acceptance prior to purchase of non-refundable or penalty airline tickets.

**Transportation/MetroLink:**

The Central West End MetroLink Station is conveniently located at the medical center on Euclid Avenue, ½ block south of Institute of Public Health.

The MetroLink trip from the airport to the medical center takes approximately 25 minutes and costs \$4.00. Taxis are available at the airport and cost approximately \$45 to the medical center.

**Accreditation:**

In support of improving patient care, Washington University School of Medicine is jointly accredited by the Accreditation Council for Continuing Medical Education (ACCME), the Accreditation Council for Pharmacy Education (ACPE), and the American Nurses Credentialing Center (ANCC) to provide continuing education for the healthcare team.

**Credit:**

AMA

Washington University School of Medicine in St. Louis designates this live activity for a maximum of

**4.5 AMA PRA Category 1 Credits™**. Physicians

should claim only the credit commensurate with the extent of their participation in the activity.

ANCC

Washington University School of Medicine in St.

Louis designates this live activity for a maximum of

4.5 contact hours.

**Parking Options:**

North Garage (Forest Park Pkwy to Euclid Avenue)

**For Further Seminar Information:**

<http://renal.wustl.edu/>

<http://cme.wustl.edu/>

National Kidney Foundation

Laura Fine, Executive Director

Suzanne McComb, Program Manager

1001 Craig Road Suite 480

Saint Louis, MO 63146-6214

855-653-2273

<https://www.kidney.org/>

**Location:**

EPNEC, Seminar Room B. 320 S. Euclid Ave, St Louis, MO 63110. Since meeting room temperatures are difficult to regulate to everyone's appeal, bringing a jacket or sweater is recommended.

**Disclosure Policy:**

It is the policy of Washington University School of Medicine, Continuing Medical Education, that planners, faculty and other persons who may influence content of this CME activity disclose all relevant financial relationships with commercial interests in order for CME staff to identify and resolve any potential conflicts of interest prior to the educational activity. Faculty must also disclose any planned discussion of off-label/unapproved uses of drugs or devices during their presentation. Detailed disclosures will be made in activity handout materials.

# ADVANCE REGISTRATION

## Nephrology Update for the Primary Care Provider Saturday, March 25, 2017

To ensure proper spelling of name, please print clearly.

---

First Name	Initial	Last Name
Degree		

---

Address

---

City/State/Zip

---

Office Phone	Fax
--------------	-----

---

Email (Required)

---

Specialty

---

Medical School Graduate of:  Washington University  Other \_\_\_\_\_ Year \_\_\_\_\_

### REGISTRATION FEES:

Physician

Allied Health

### By March 10 After March 10

\$135

\$160

\$110

\$125

Fee includes enrollment, continuing education credits, continental breakfast, luncheon, refreshment breaks and self-parking in BJC North Garage.

### CONVENIENT WAYS TO REGISTER:

- ONLINE - secure and immediate payment confirmation at <http://cme.wustl.edu>
- MAIL completed form to: Washington University; CME/WUSM, Campus Box 8063 660 S. Euclid Ave., St. Louis, MO 63110

Registration/Payment Policy: Your full payment in advance completes your registration and ensures your enrollment in this course. If you have not received an acknowledgement within two weeks of your registration submission, please call the CME office (314-362-6891). Opportunities for on-site registration are limited and may be unavailable. To inquire about the availability to register on-site, please contact the CME office.

**Cancellations:** Seminar registration fee less \$25 administrative charge is refundable if cancellation is received in writing by March 22, 2017.



Division of Nephrology, CB 8126  
660 S. Euclid Ave.  
St. Louis, MO, 63110

# Nephrology Update For the Primary Care Provider

# March 25, 2017

More CME credit available ONLINE at  
<http://cme-online.wustl.edu>

Visit our website for other CME activities  
<http://cme.wustl.edu>



follow us at @wustlcme